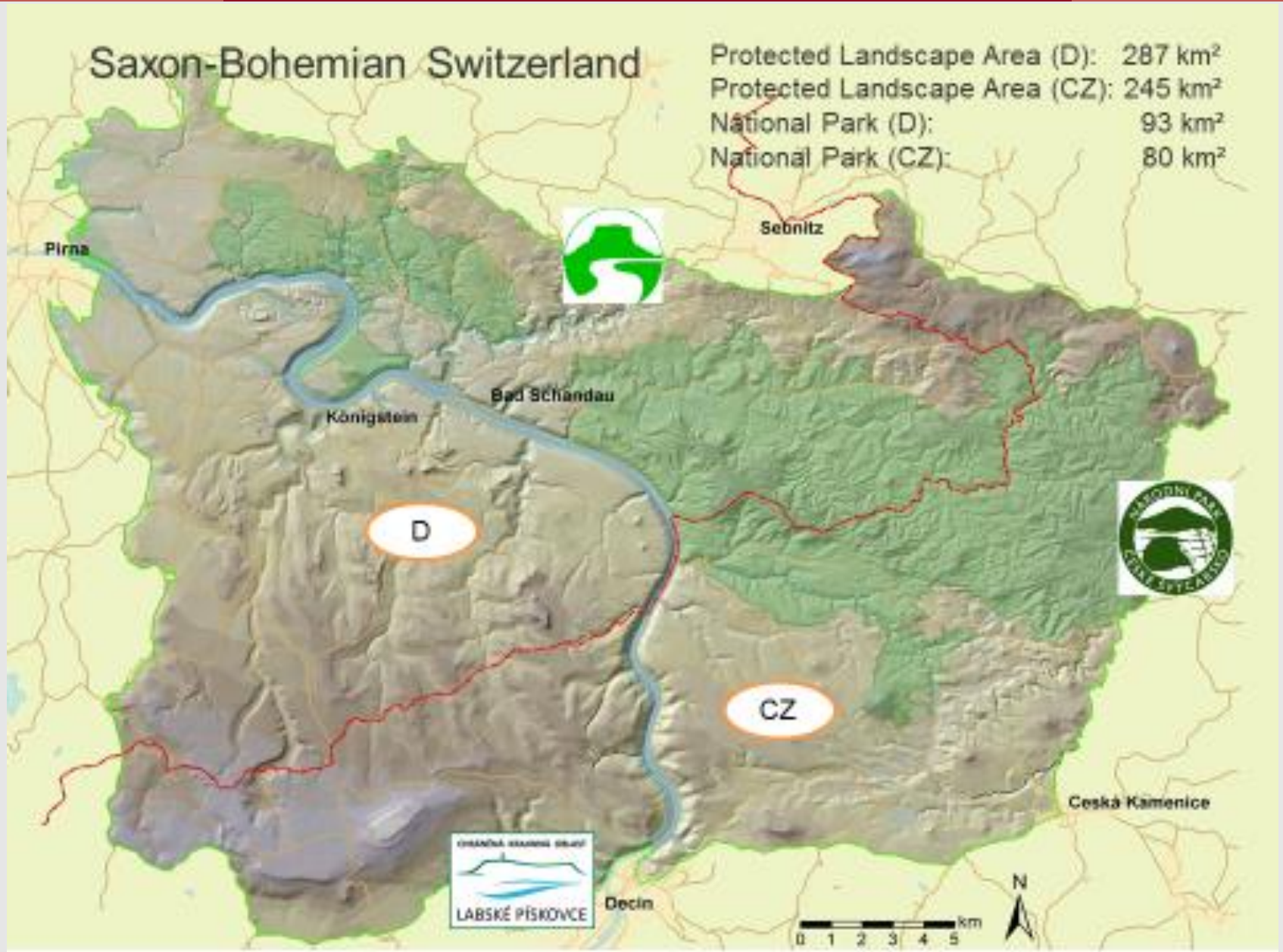


Saxon-Bohemian Switzerland:

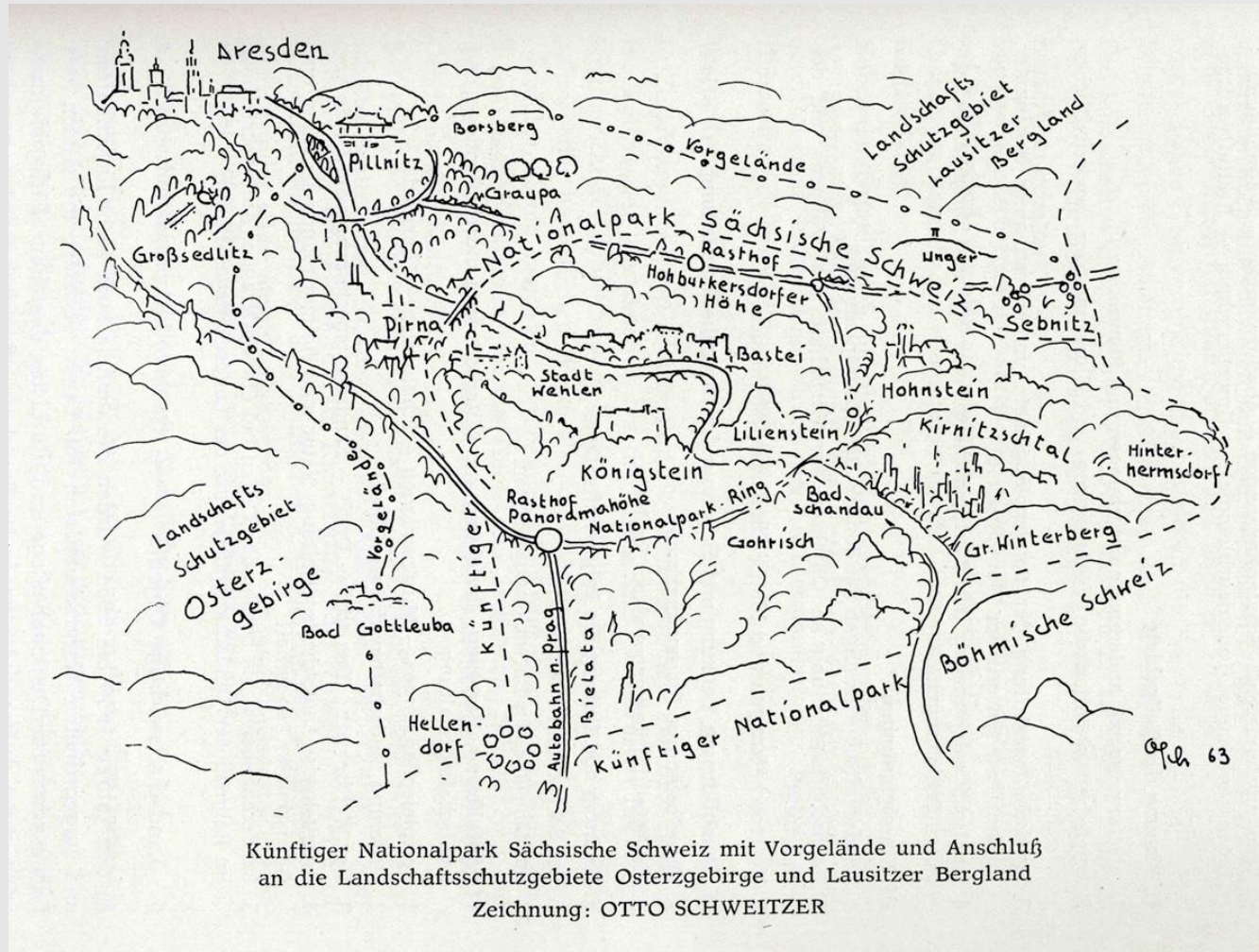
Four protected areas, two countries,
one landscape



Pavel Benda & Jürgen Phoenix



Idea of transboundary National Parks



Wiedemann, Kurt (1963): Zur Problematik der Perspektivplanung für die Sächsische Schweiz; - in Rat des Kreises Pirna (Hg.): Berichte des Arbeitskreises zur Erforschung der Sächsischen Schweiz in der Geographischen Gesellschaft der DDR (Sektion Dresden), S.119

1956: Declaration of the
Protected Landscape
Area Saxon Switzerland



1956: Vyhlášení
Chráněné krajinné
oblasti Saské
Švýcarsko

1972: Declaration of the
Protected Landscape
Area Labské pískovce /
Elbe Sandstones



1972: Vyhlášení
Chráněné krajinné
oblasti
Labské pískovce



1990: Declaration of the National Park Saxon Switzerland



1990: Vyhlášení Národního parku Saské Švýcarsko

2000: Declaration of the National Park Bohemian Switzerland



2000: Vyhlášení Národního parku Saské Švýcarsko

2003: The regulation about National Park Region Saxon Switzerland (National Park and Protected Landscape Area) becomes effective



2003: V platnost vstupuje Vládní nařízení o Regionu Národního parku Saské Švýcarsko

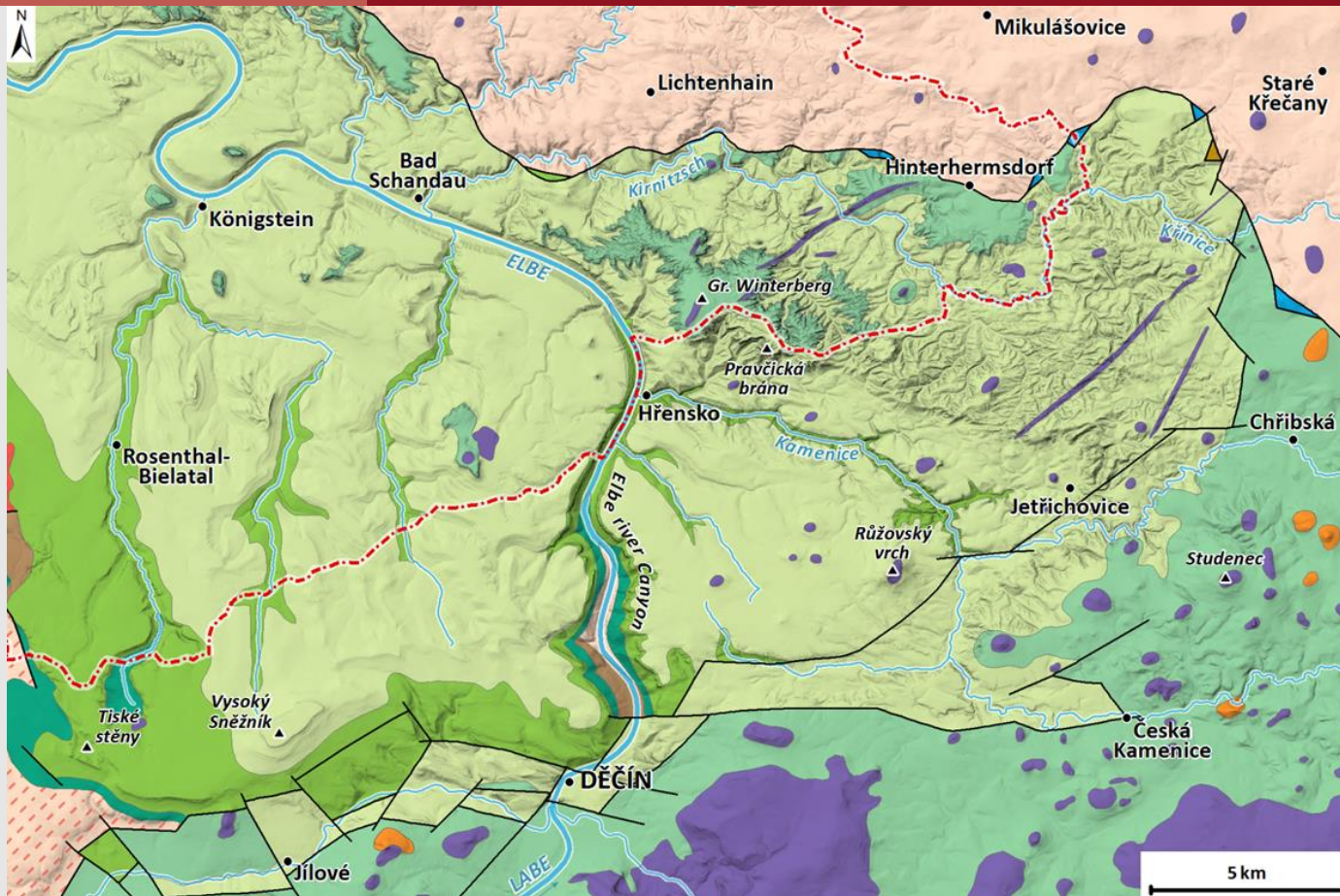
National Park Region Saxon-Bohemian Switzerland



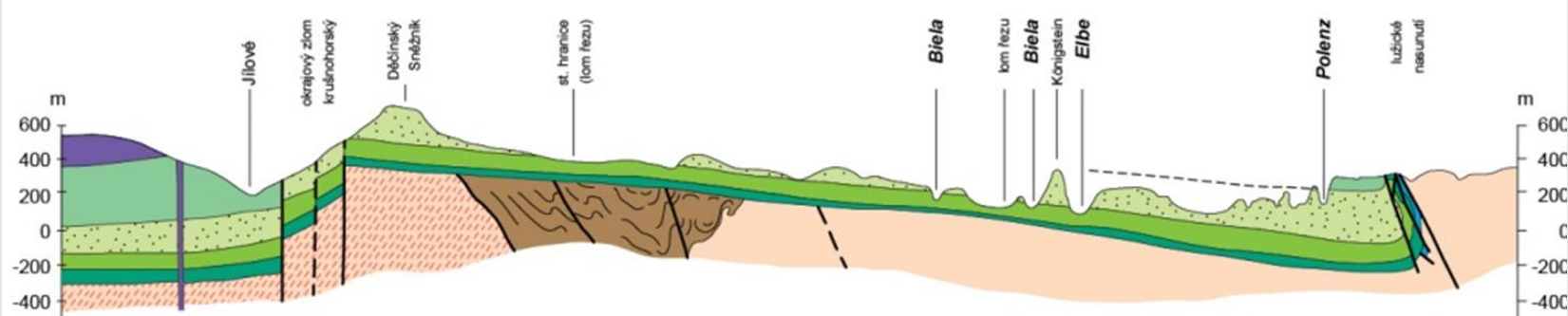




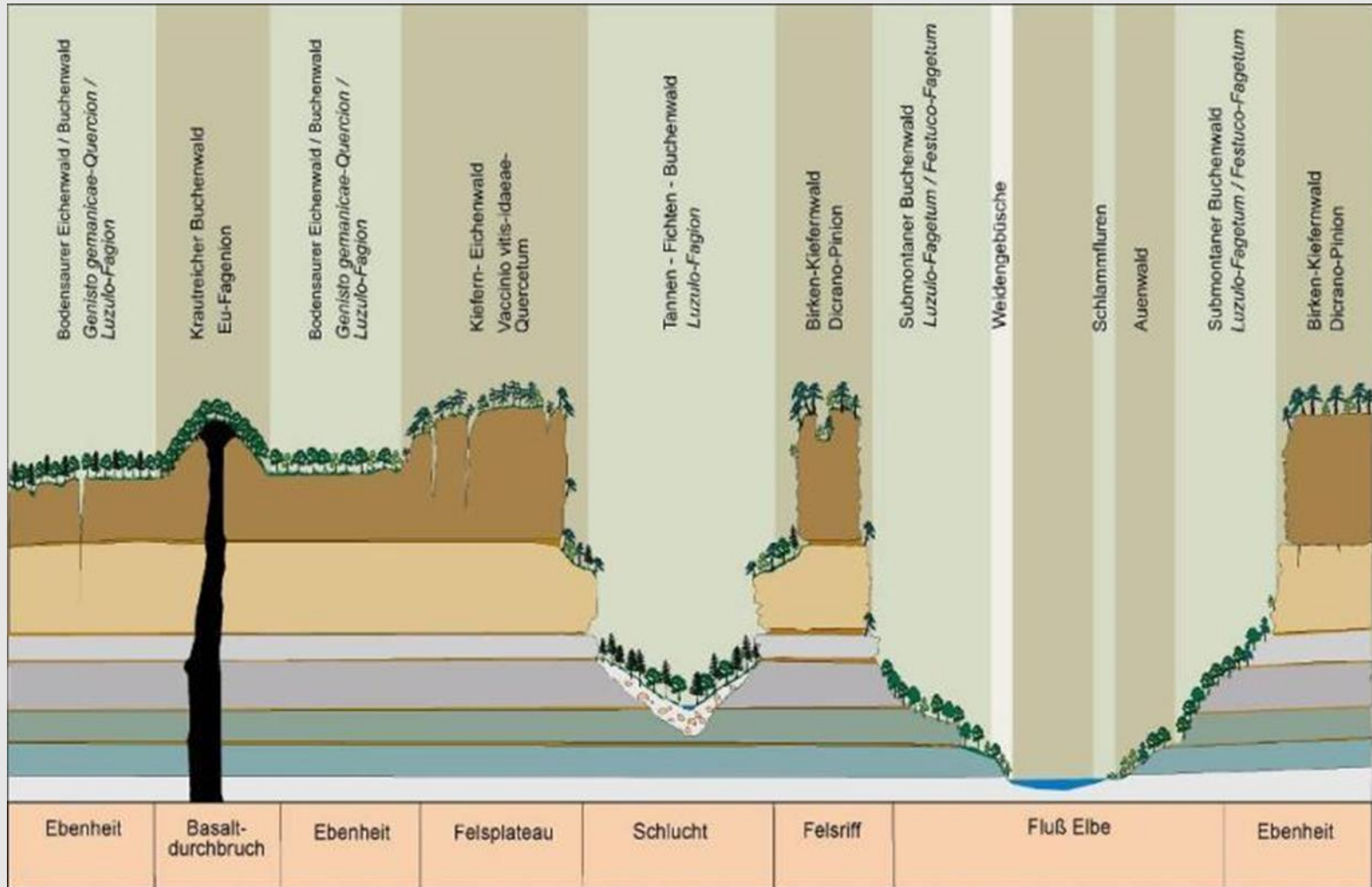
National Park Region Saxon-Bohemian Switzerland



- TERTIARY**
 - Phonolite, trachyte
- TERTIARY TO LATEST MESOZOIC**
 - Basalt, polzenite
- MESOZOIC, CRETACEOUS**
 - Teplice, Březno and Merboltice Formations: Siltstone, sandstone (Santonian to Turonian)
 - Jizera Formation: quartzose sandstone (Turonian)
 - Bílá Hora Formation: mostly quartzose sandstone (Turonian)
 - Peruc-Korycany Formation: mostly quartzose sandstone (Cenomanian)
- MESOZOIC, JURASSIC**
 - Limestone, dolomite, sandstone
- LATE PALEOZOIC**
 - Sandstone, claystone
 - Markersbach granite
- EARLY PALEOZOIC TO PROTEROZOIC**
 - Phyllite, greywacke
 - Granitic rocks of Lusatian pluton
 - Krušné hory orthogneiss



Montane and Alpine species in deep gorges at very low altitudes, Micro-climatic inversion



© nach: Schmidt (1954), Härtel (1994), Grafik: Richter

Saxon-Bohemian Switzerland: One of the oldest Central European tourist destinations













emian Switzerland: role of microclimate



2012-10-14 2:39:25 PM M 1/5





Saxon-Bohemian Switzerland: 3 essential basis of our co-operation

- Shared natural and cultural heritage
- Formal basis
- Personal basis



Saxon-Bohemian Switzerland: Formal basis of our co-operation

Short-term basis: Annual working plans for 4 WG:



nature conservation/monitoring
forest management
environmental education
visitor management

Saxon-Bohemian Switzerland: Joint projects – shared challenges Visitor management



Saxon-Bohemian Switzerland: Joint projects – shared challenges Forest management (National Parks)



Saxon-Bohemian Switzerland:

Joint projects – shared
challenges

**Forest management:
invasive species:**

White pine (*Pinus strobus*)



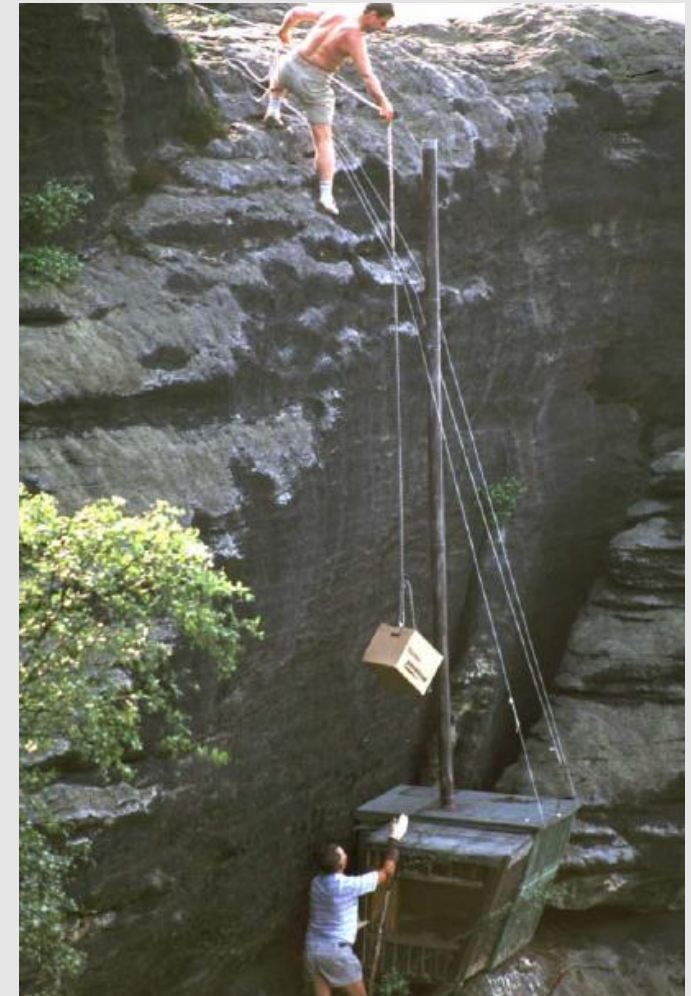
Saxon-Bohemian Switzerland: Joint projects – shared challenges Forest management:

Promotion of Silver Fir (*Abies alba*)



Saxon-Bohemian Switzerland: Joint projects – shared challenges Reintroduction project:

Peregrine falcon
started in 1990, within
seven years 77 young
falcons were released in
Saxon Switzerland



Saxon-Bohemian Switzerland: Joint projects – shared challenges Reintroduction project:

Elbe-Salmon

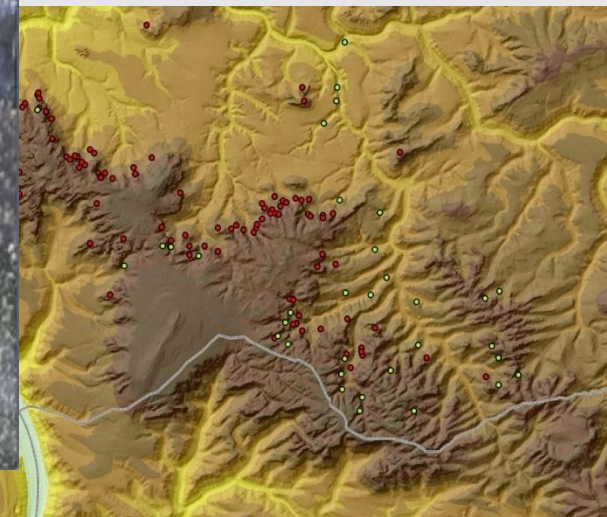
1994 the Sächsische Landesanstalt für Landwirtschaft started with the implementation of the Elbe-Salmon 2000 Program (Elblachs 2000)

In 1994 the first salmon spawn (from Sweden) was incubated and in spring 1995 the first salmon fry was released into the Lachsbach in the Saxon Switzerland

On 26 October 1998 the first salmon was caught in the Saxon-Bohemian Switzerland



Saxon-Bohemian Switzerland: Joint projects – shared challenges **Transboundary research and monitoring:** **Digital elevation model (TU Dresden)**



Junior Ranger Project



National Park Partner Project



Saxon-Bohemian Switzerland: Joint projects – shared challenges

Visitor centres:

Saxon Switzerland National Park Centre Bad
Schandau

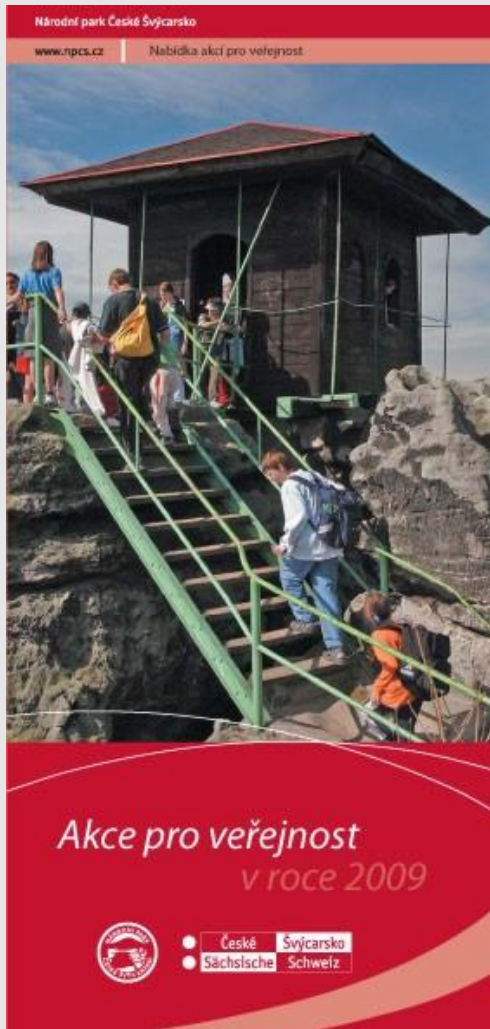


Saxon-Bohemian Switzerland: Joint projects – shared challenges **Visitor centres:** Bohemian Switzerland Centre Krásná Lípa



Saxon-Bohemian Switzerland:

Joint projects – shared challenges:
Transboundary corporate design; joint logo



Thank you for your attention

