

Management intervention in a non-intervention area of a national park core zone:

YES or NO???

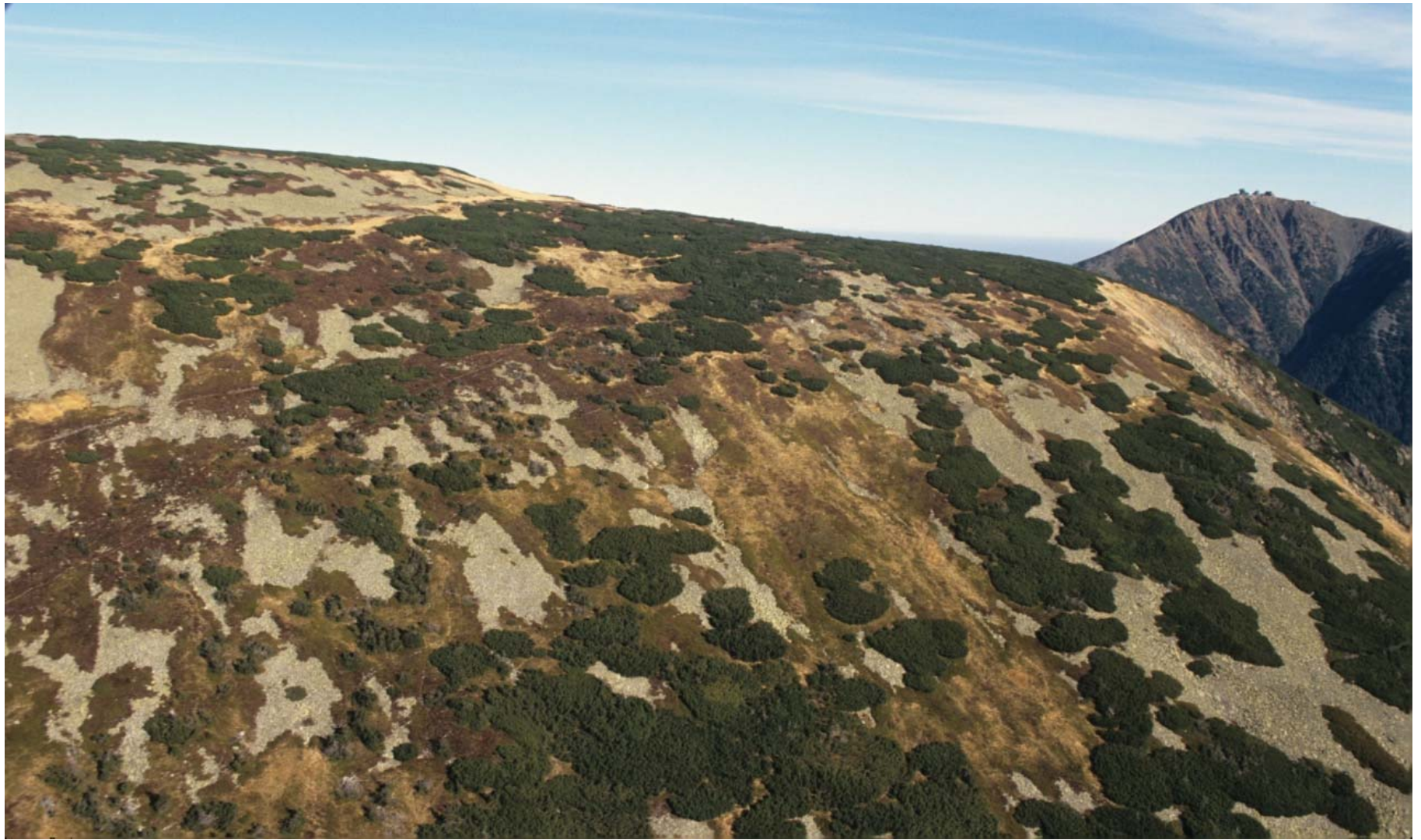
Jan Materna

Department of Nature Conservation
The Krkonoše Mts. National Park Administration



Case study from the Krkonoše Mts. national park





Subalpine belt (1250-1450 m a.s.l.)



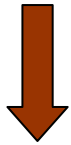


**Intensive dwarf pine planting in the Krkonoše Mts:
1887-1916 (261 ha) and 1966-1992 (292 ha)**



Potential negative impact on:

- temperature and humidity regime
- wind and snow activity



- vegetation cover
- intensity of cryogenic processes



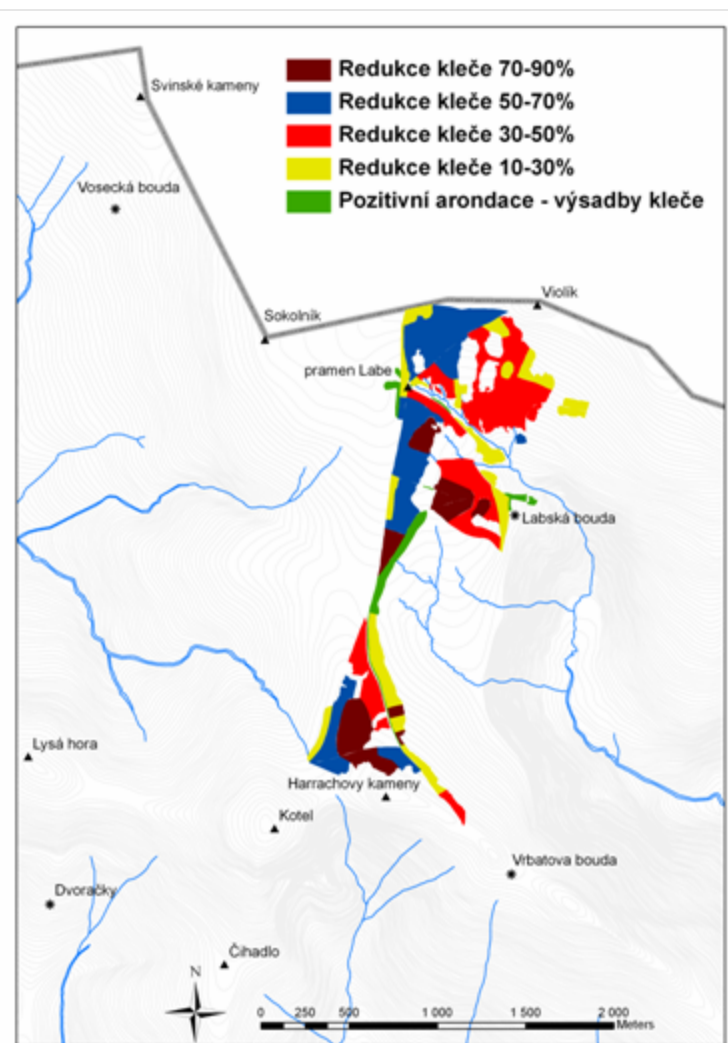
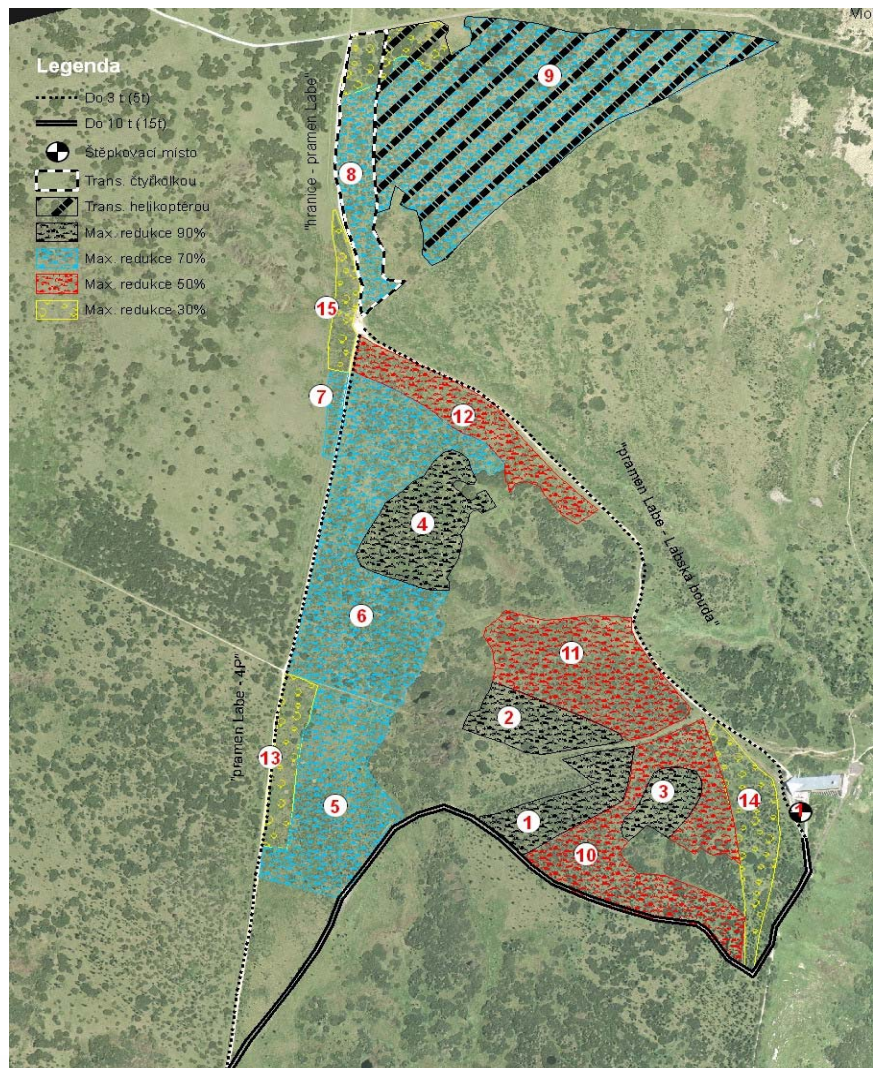
Intensive research of dwarf pine ecosystems (1993-1999)

26 papers were published in Yearbook of Scientific papers from the Krkonoše NP in 2001 and 2002, dealing with:

- vegetation history (palaeoecological research)
- vegetation dynamic in dwarf pine ecosystems
- site and stands condition of dwarf pine stands
- interactions between dwarf pine and grassland vegetation
- microclimatic relationships
- frost phenomena in relation to dwarf pine
- soil development in dwarf pine (subalpine) zone



Management plan of dwarf pine plantations reduction



Pilot project in 2010



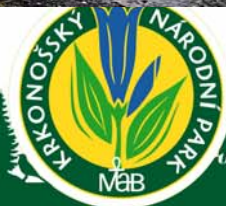
Pilot project in 2010



Pilot project in 2010



Pilot project in 2010



Pilot project in 2010



Pilot project in 2010

- reduction on 38 ha
- 1000 t of a dwarf pine biomass removed
- costs: 250.000 Euro

Future plans - reduction on 142 ha



Before



After management intervention




Before



After management intervention





Thank you for your attention!

I am grateful to my colleagues from the Department of Nature Protection
- Jan Vaněk , Tomáš Janata and Josef Harčarik,
for providing me with photos and management plan.