



Evaluation of surface water quality of upper flow Jizera River

Bc. Zuzana Hladíková, doc. Ing. Nina Strnadová, CSc., Ing. Jaroslav Andrlé, Ph.D.



VYSOKÁ ŠKOLA
CHEMICKO-TECHNOLOGICKÁ
V PRAZE



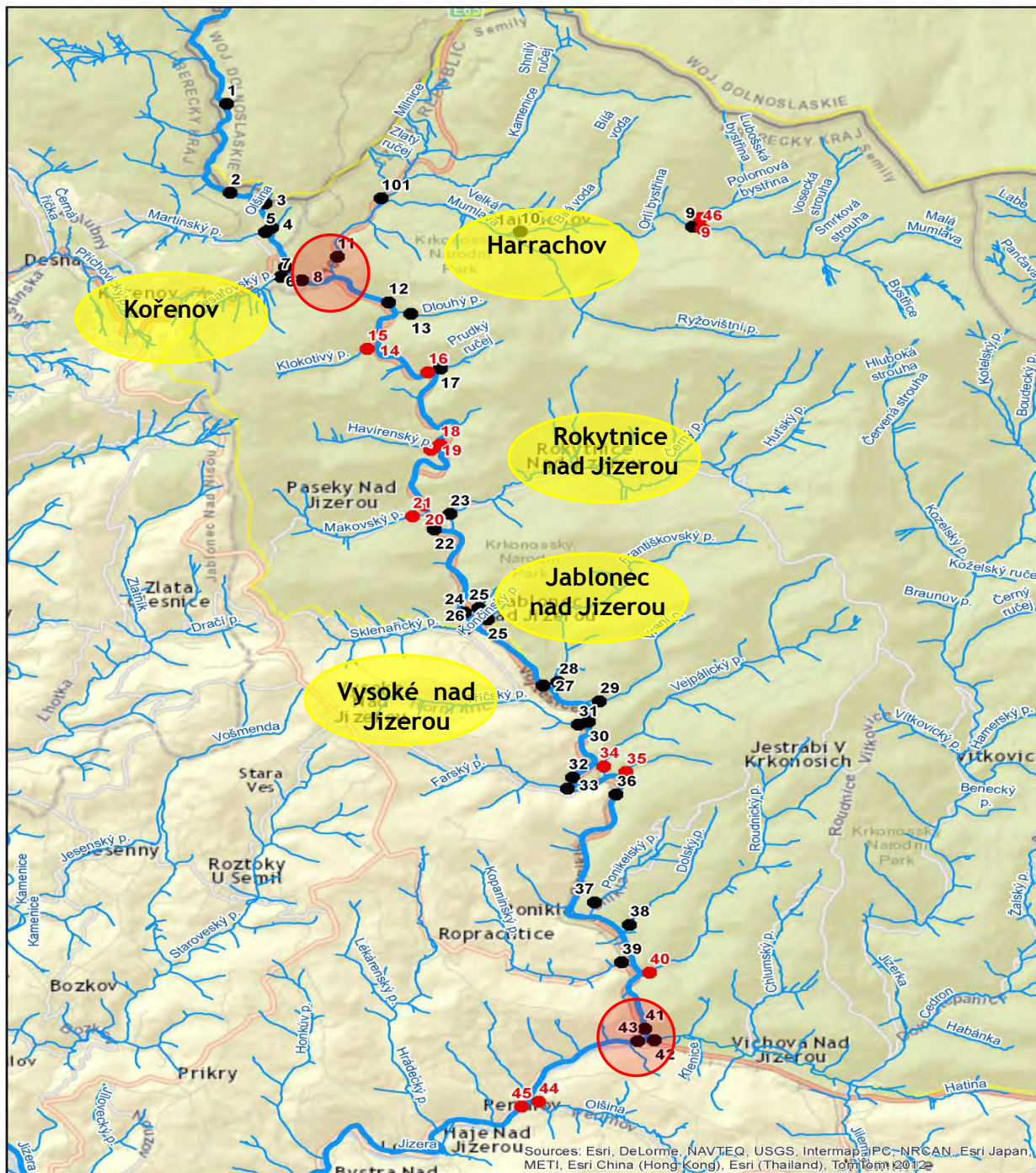


2012
(May to November)

47 sampling profiles
(in the end only 34)

Recreational
sport areas

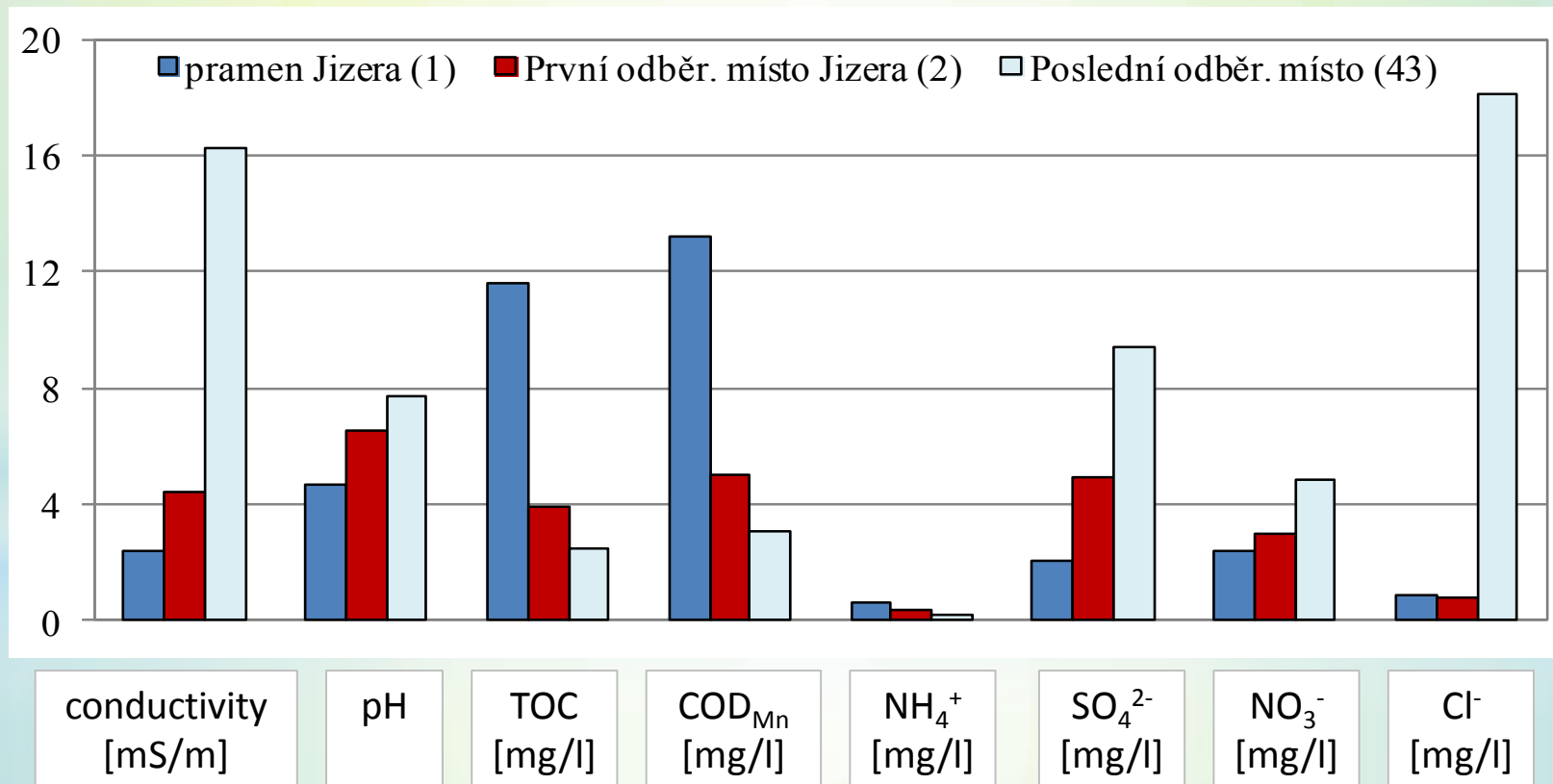
Important inflows:
Mumlava
Jizerka



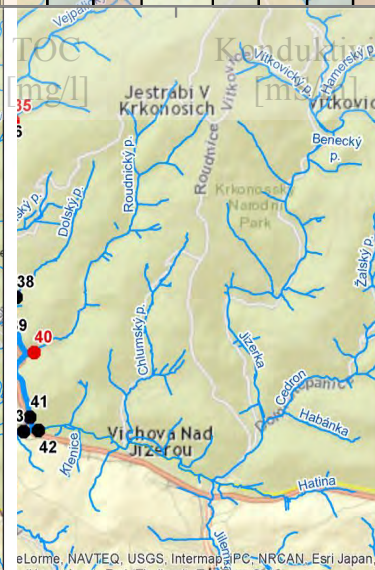
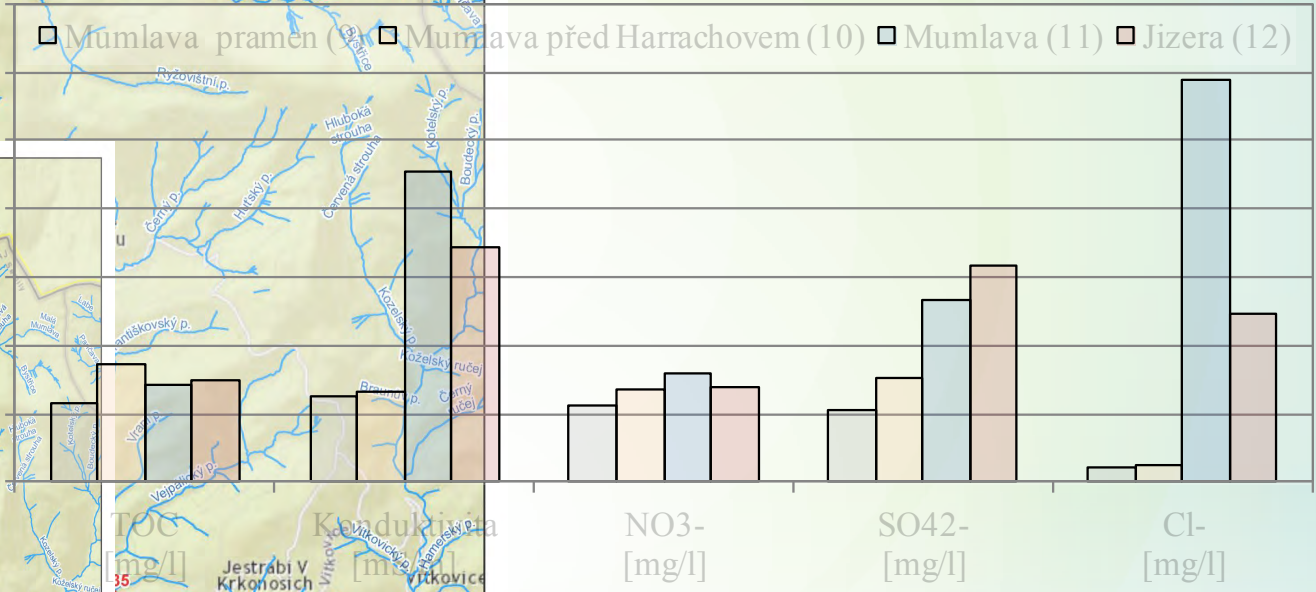
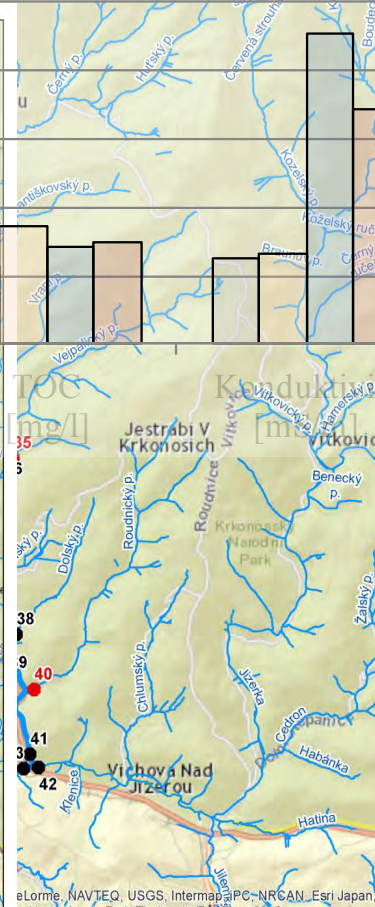
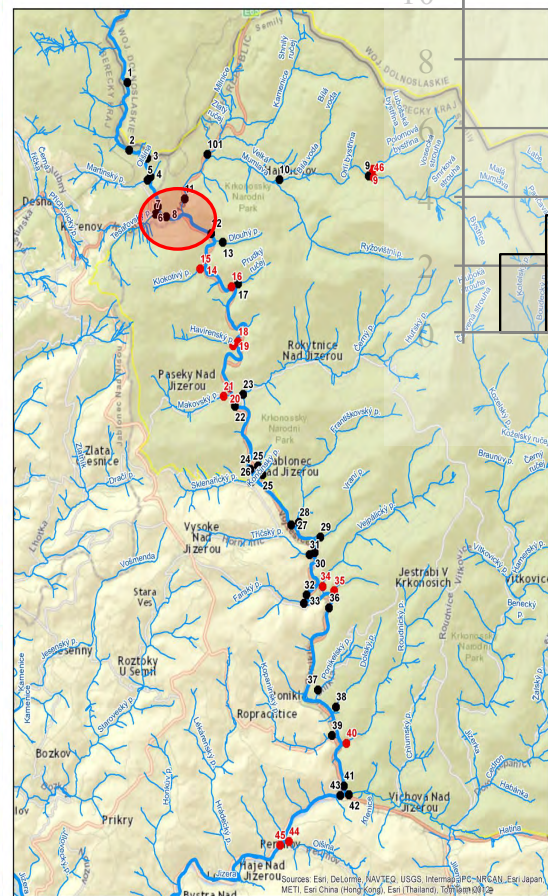
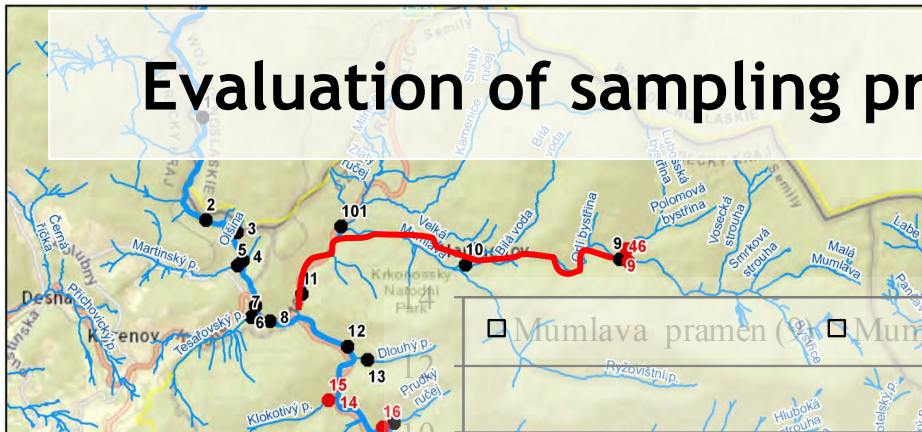
Indicators for water quality evaluation

Average values of indicators

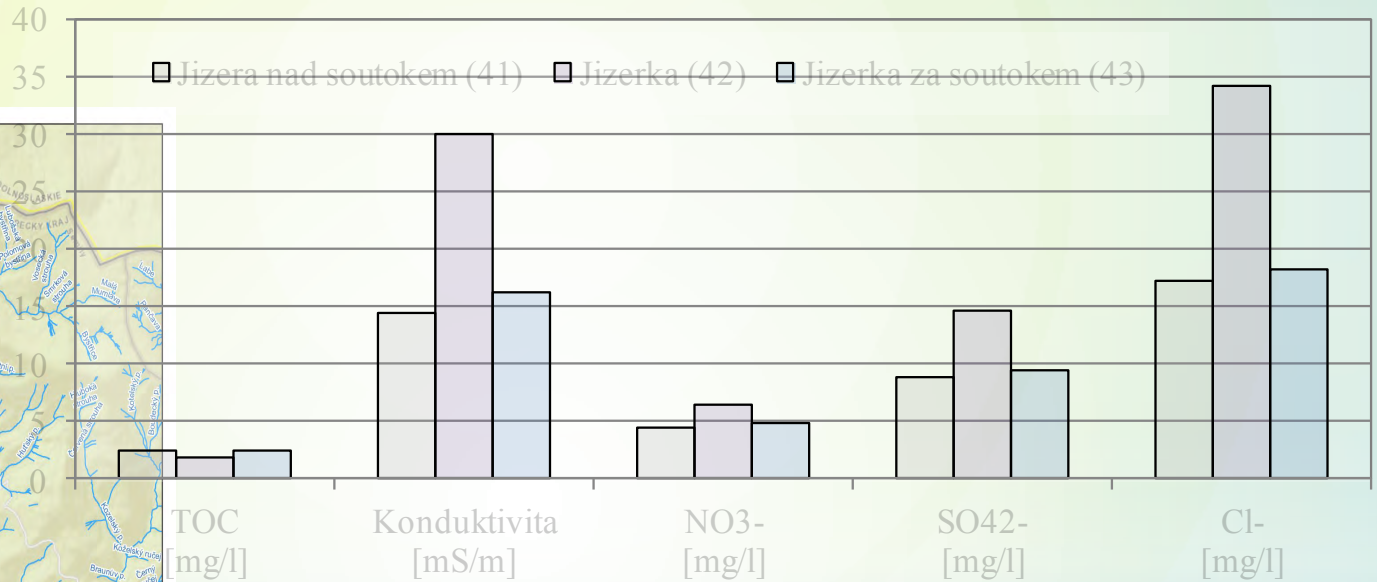
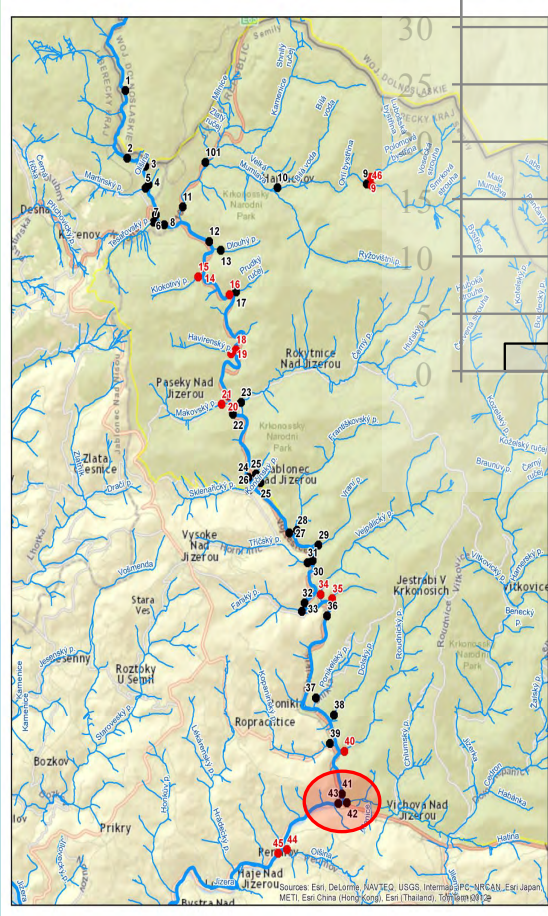
(spring Jizera (1), the first sampling profil Jizera (2), the last sampling profil Jizera (43))



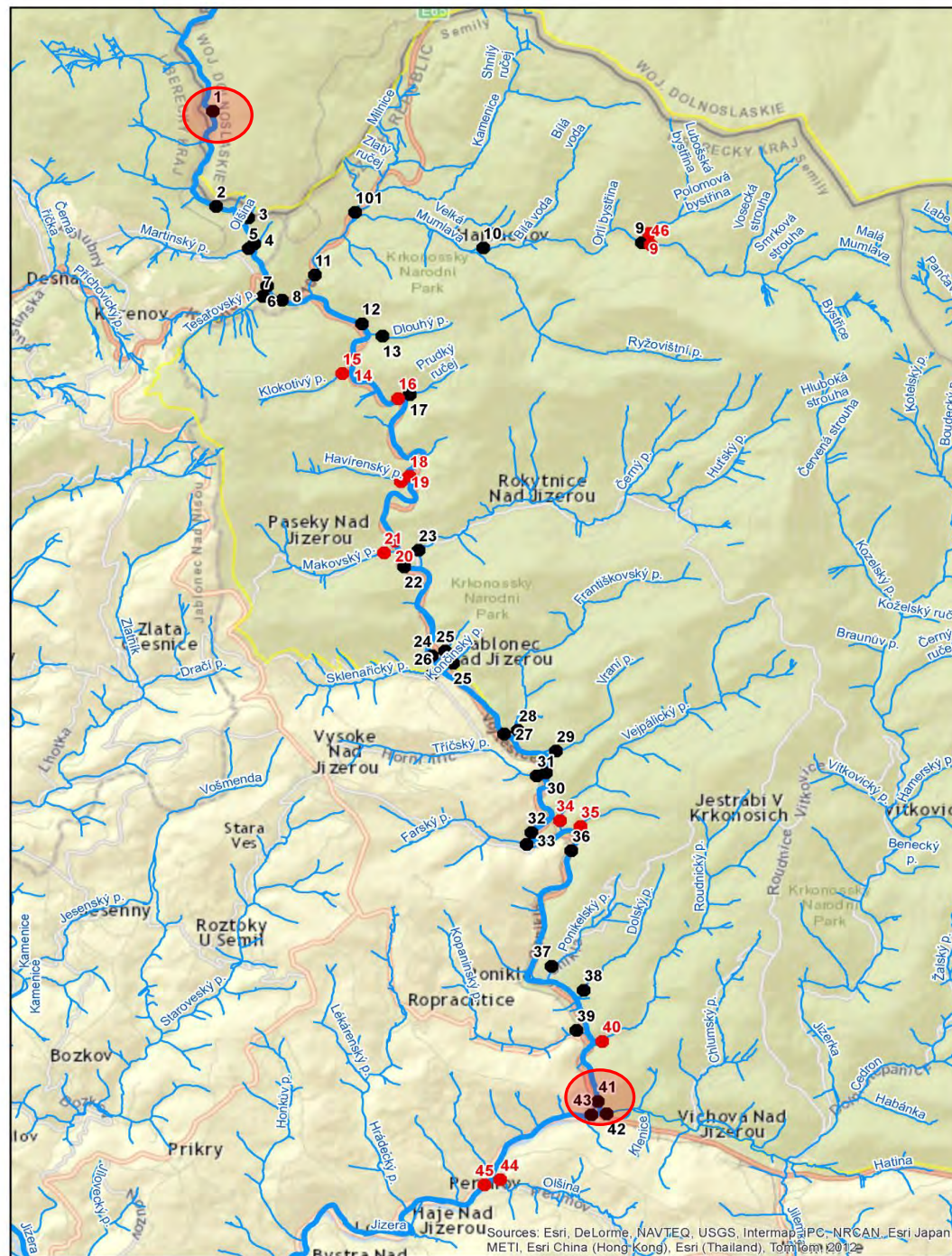
Evaluation of sampling profiles - Mumlava (9 - 12)



Evaluation of sampling profiles - Jizerka (41 - 43)

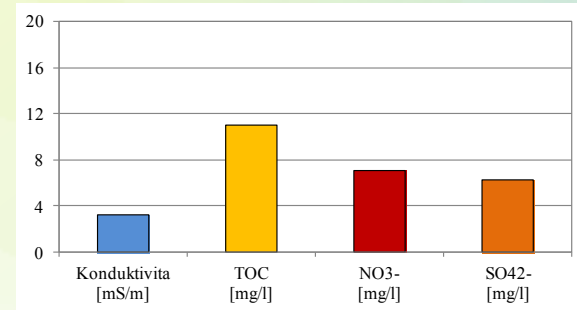
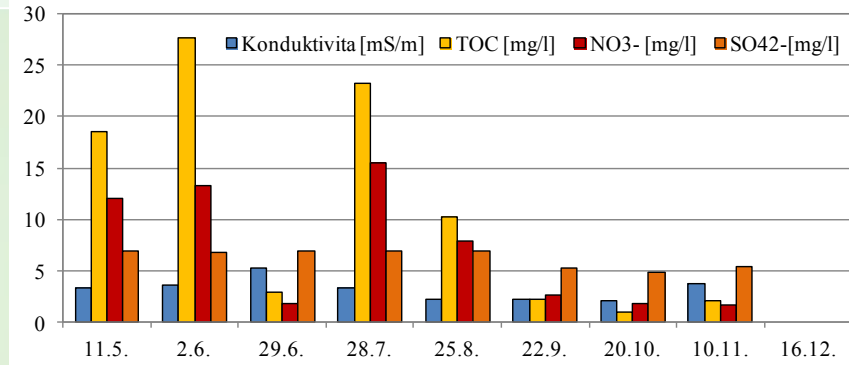


The first sampling profil Jizera (1)

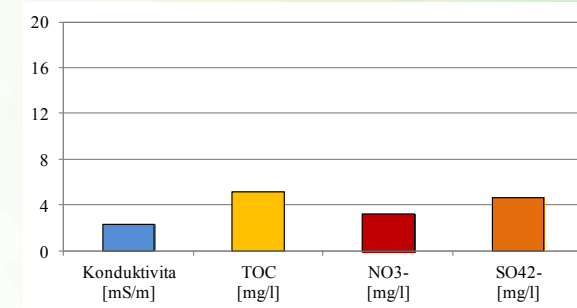
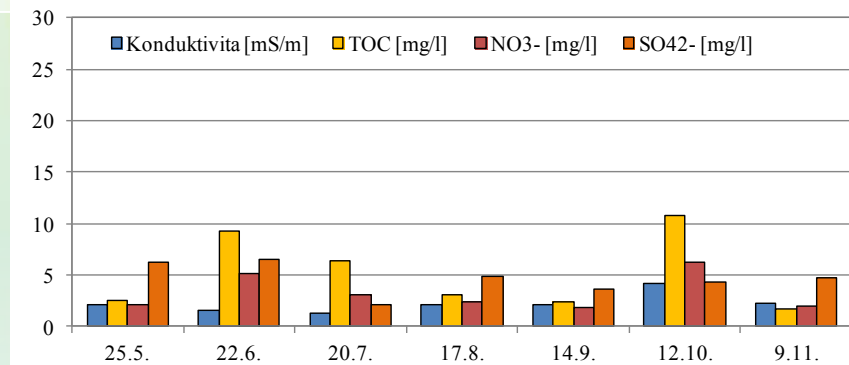


The last sampling profil Jizera (43)

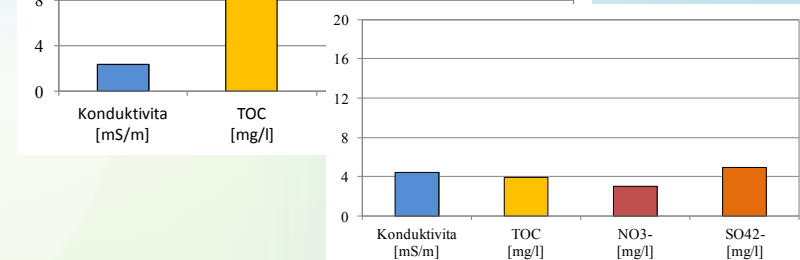
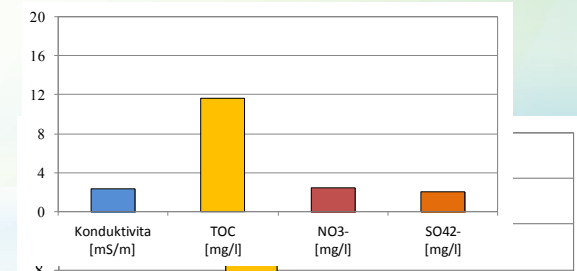
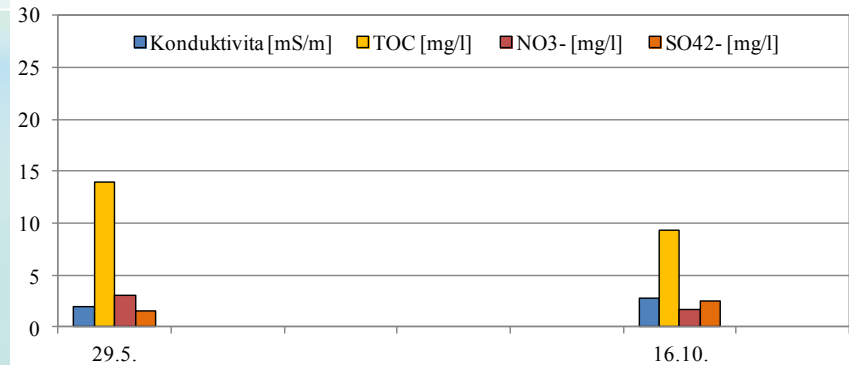
Spring Labe (2010)



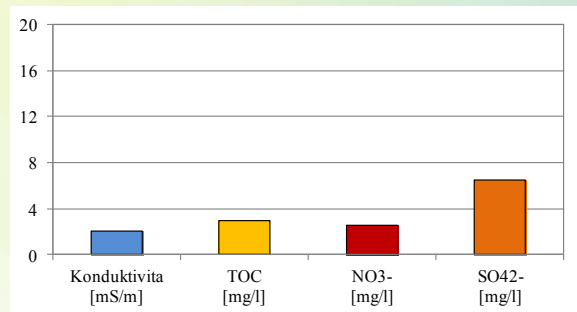
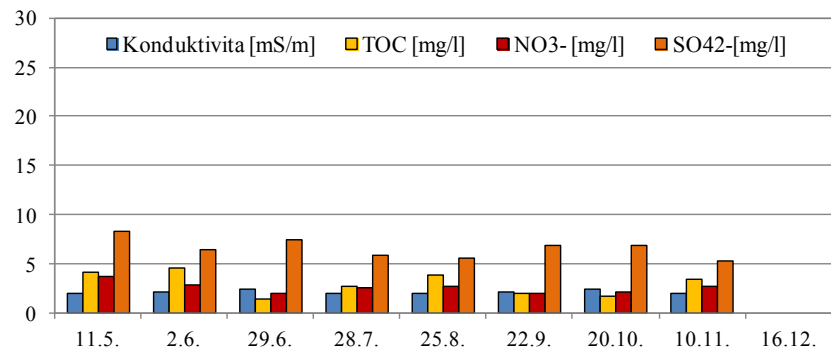
Spring Úpa (2011)



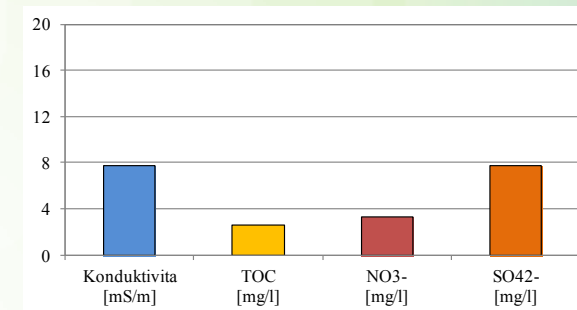
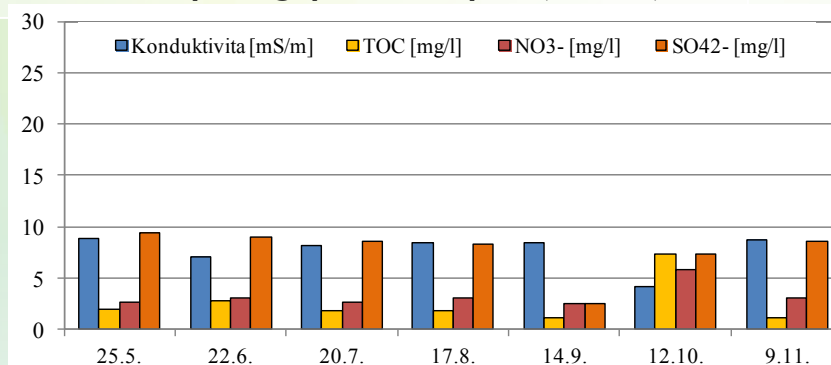
Spring Jizera (2012)



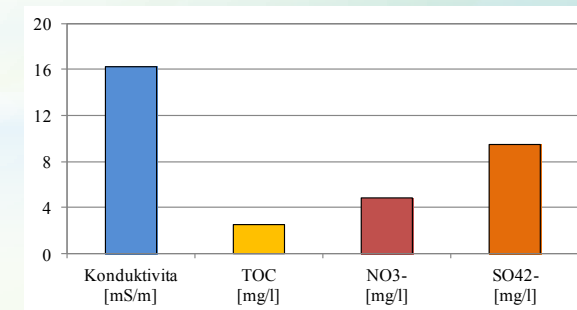
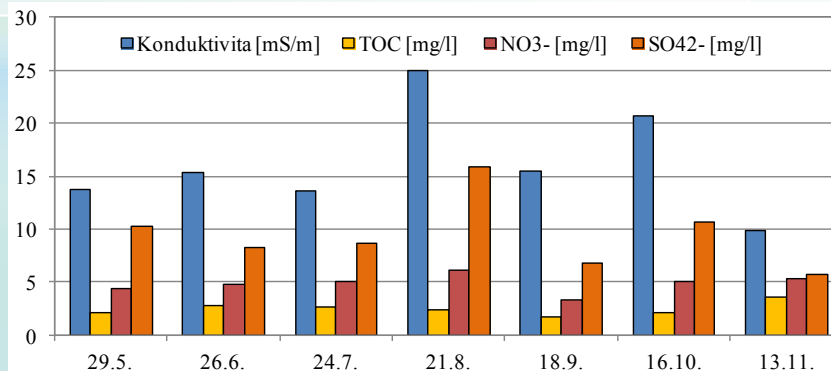
The last sampling point Labe (2010)



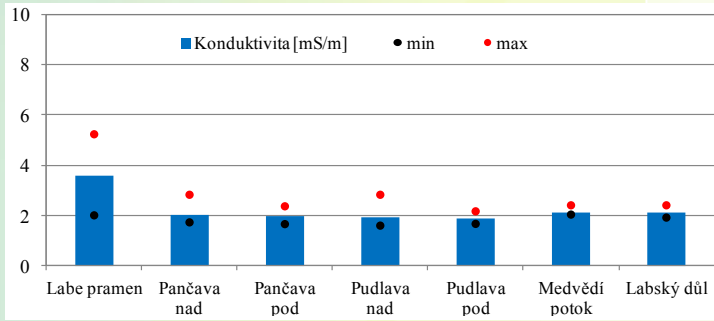
The last sampling point Úpa (2011)



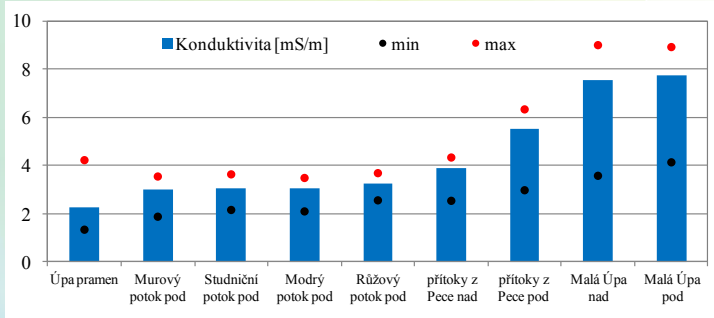
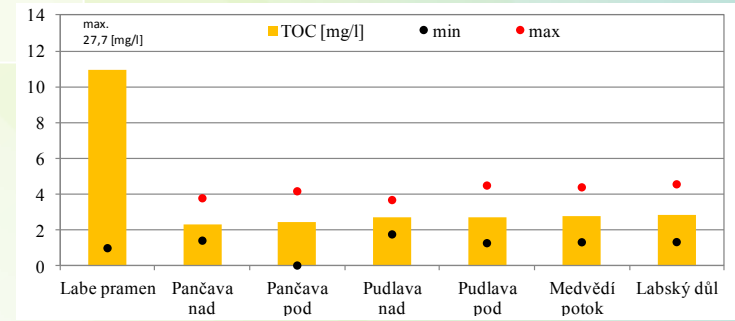
The last sampling point Jizera (2012)



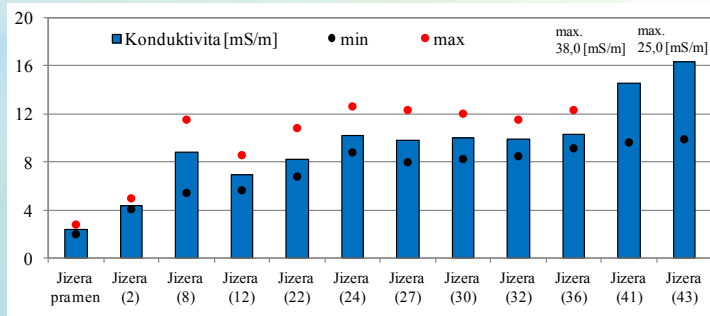
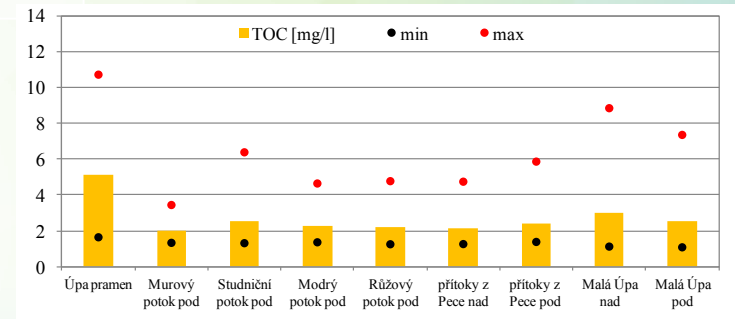
Comparison of statistics values Labe, Úpa and Jizera River



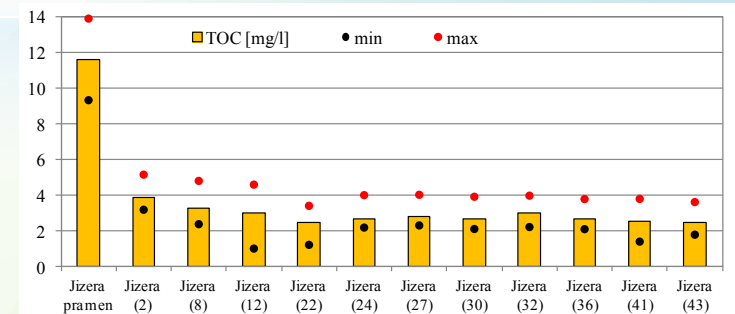
Labe (2010)



Úpa (2011)



Jizera (2012)



Conclusion

- The work deals with the long-term evaluation of surface water quality (Labe River - 2010, Úpa River - 2011, Jizera River - 2012).
- Important for quality of Jizera River are their inflows, especially the last inflow - Jizerka River (42). The values of all indicators are higher in comparison with spring Jizera. The most change is for indicator conductivity - 12 %.
- The evaluation of Jizerka water quality will be concentrated this year.

Notice...

Ponikelský potok (profil 37)





Thank you for your attention.

