

# *Cross-border Co-operation in Krkonoše National Park*

**Co-operation between KRNAP and KPN  
or  
Using European projects to further the  
development of Krkonoše**



## Joint targets for national parks

---

Main targets for implemented projects:

- Maintaining the natural wealth of Krkonoše;
- Supporting sustainable tourism;
- Co-operation in environmental education;
- Ensuring the tools for nature protection;
- Co-operation between institutions and employees.

# Joint logo for KRNAP and KPN

---

KRNAP and KPN have a single joint logo – as the only two national parks in Europe.



## Joint projects

---

### Programme period 2007 – 2013

- 6 projects within Operational Programme for Transboundary Co-operation Czech Rep.-Poland
  - Total budget 5.2 million EUR
- 7 micro-projects
  - Total budget 337,000 EUR

### Programme period 2014 – 2020

- 2 projects within Operational Programme for Transboundary Co-operation Czech Rep.-Poland
  - Total budget 0.9 million EUR

Evaluation of applications is currently taking place.

# Krkonoše in INSPIRE - joint GIS in nature protection

---

6/2010 – 4/2014

- Harmonisation of data in the geographical information system according to INSPIRE directive
- Ten basic threads chosen – Natura 2000, fauna, flora, wetland ecosystems, forests, geology, geomorphology, pedology, ecological corridors and tourism
- Collection of actual entry information carried out by laserscanning of the territory
- Creation of new geoportal <http://geoportal.krnap.cz>
- Installation of visitor counting sensors in the mountains

# Krkonoše in INSPIRE - joint GIS in nature protection



Tourism



Natura 2000



Fauna



Flora



Wetland ecosystems



Ecological corridors



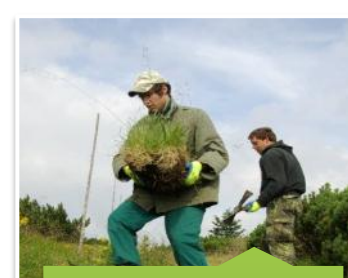
Forests



Geology and geomorphology



Damaging influences

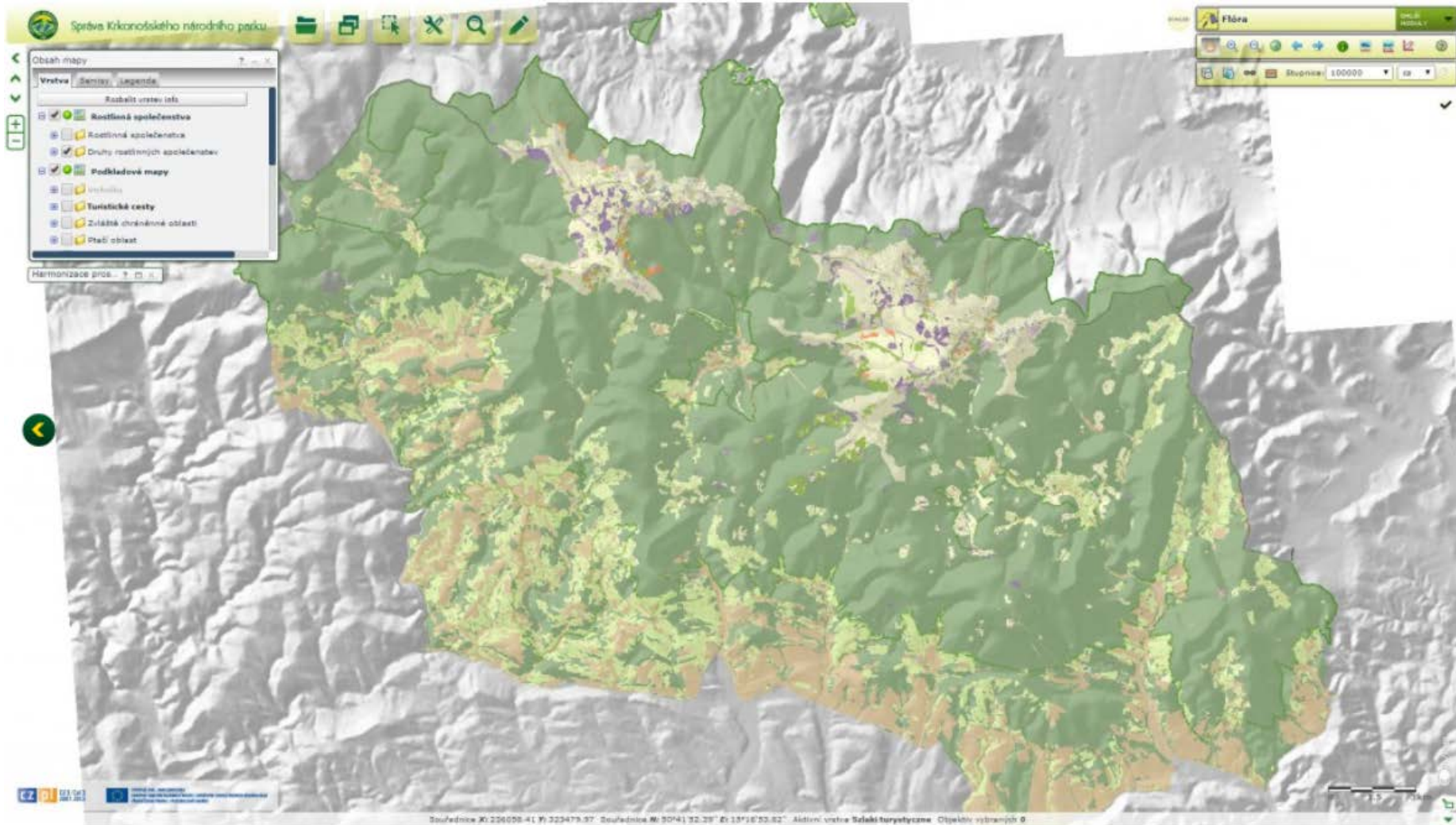


Technical infrastructure

Harmonisation of data

# Krkonoše in INSPIRE - joint GIS in nature protection

## Geoportal

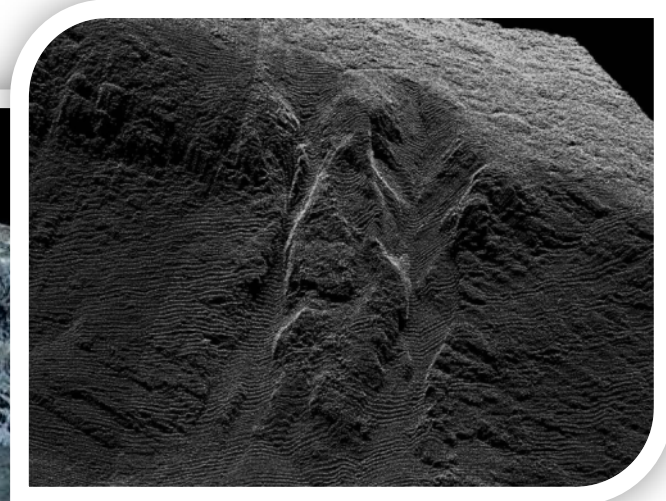
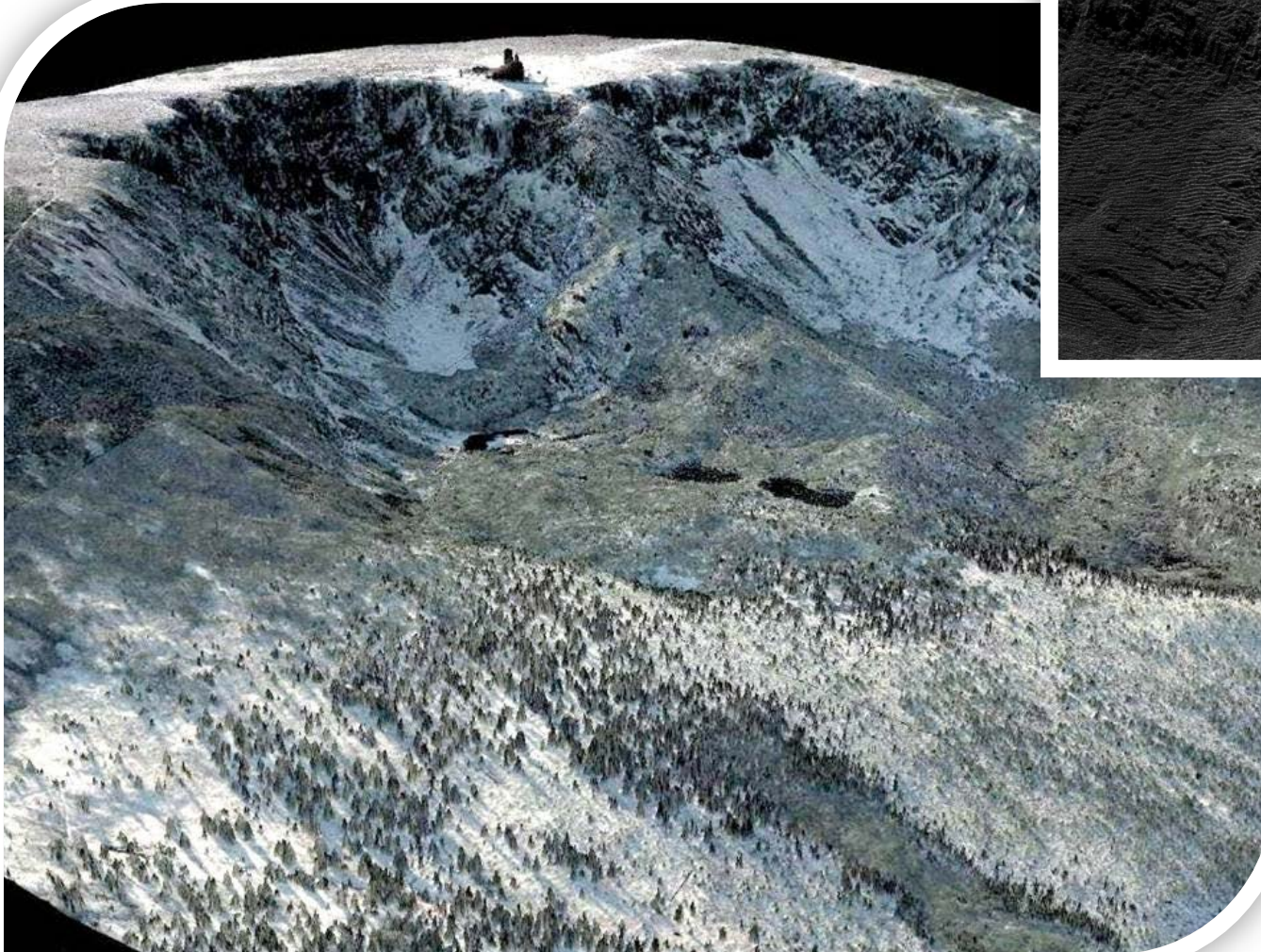






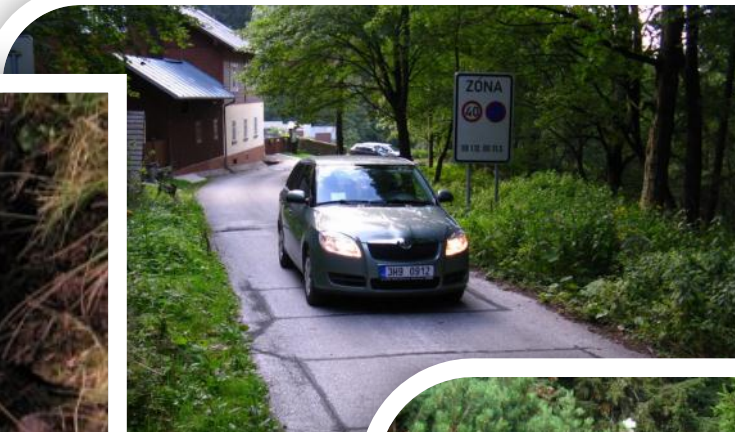
# Krkonoše in INSPIRE - joint GIS in nature protection

Laser scanning



# Krkonoše in INSPIRE - joint GIS in nature protection

## Monitoring návštěvnosti



# Fauna Krkonoš

## Fauna Karkonoszy

---

2/2013 – 9/2015

- Collect comparable data for the whole Krkonoše mountain range on the distribution, population size, respectively, population trends for three model groups of animals indicating the quality of the natural environment:
  - butterflies;
  - birds;
  - bats.
- Monitor migration routes, learn about the life requirements and behaviour of the red deer.

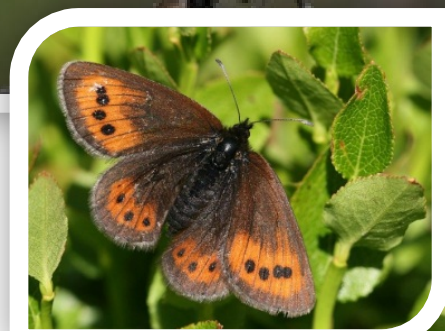
# Fauna in Krkonoše

---

Significance of the project:

- Actual knowledge on the species diversity and abundance of key bio-indicator groups on the Czech and Polish sides of Krkonoše;
- Relevant data for government decision-making on both national parks (including Natura 2000);
- Complex data for evaluating and planning the management of forest and non-forest ecosystems.

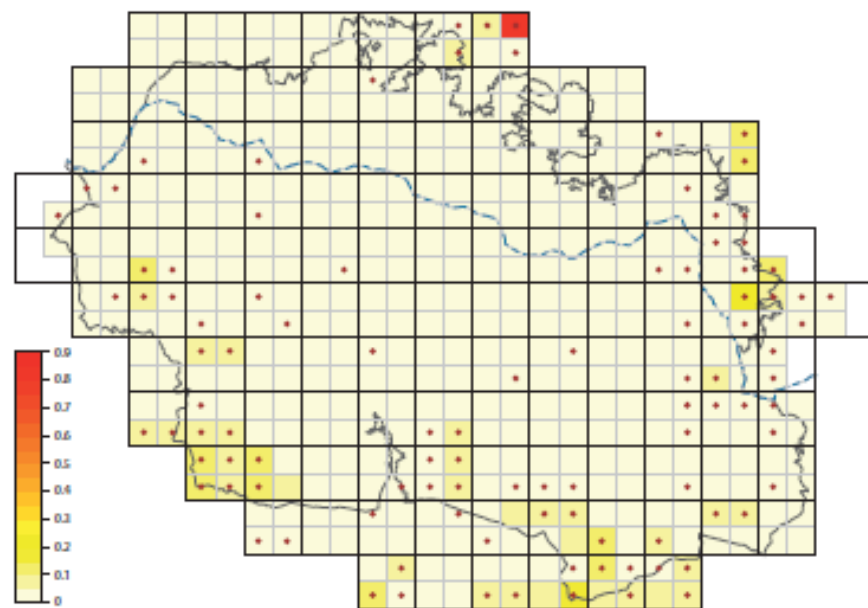
# Fauna in Krkonoše



# Fauna in Krkonoše

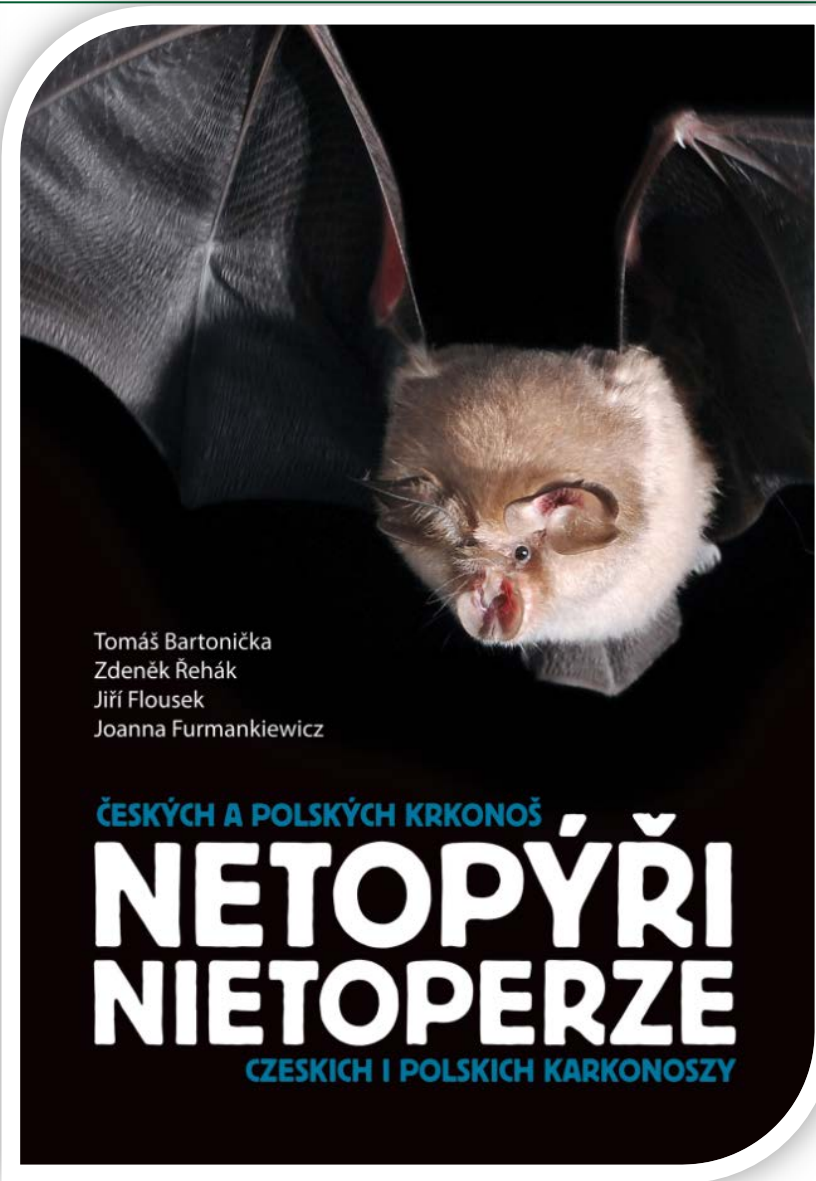


Část projektu byla zaměřena i na monitoring ptactva (čáp černý s mláďaty na hnízdě)

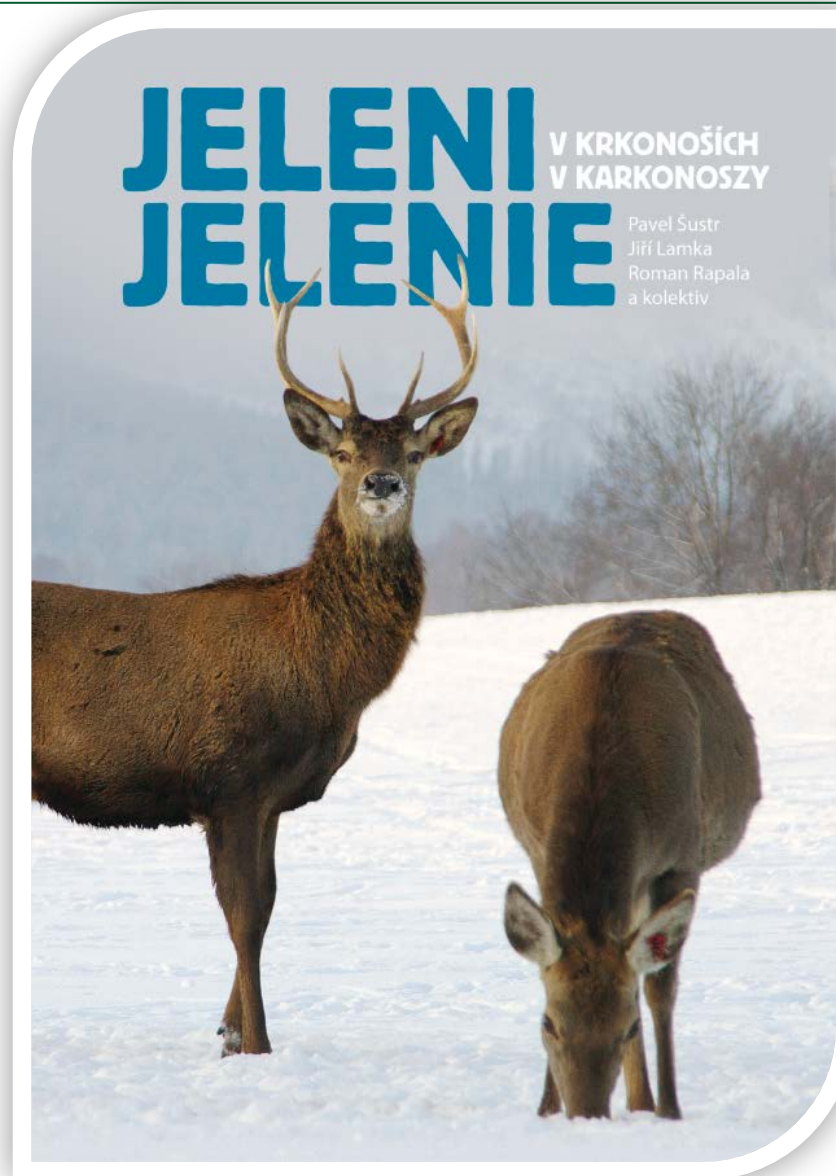


Mapa s aktuálním rozšířením čápa černého v české a polské části Krkonoš v letech 2012-2014

# Fauna in Krkonoše



# Fauna in Krkonoše





# Development of tourist infrastructure in KRNAP and KPN

---

6/2010 – 8/2013

- Development of the tourist offers at less exposed localities in Krkonoše.
- Renewal of the monastery gardens in Vrchlabí:
  - Raised herb beds,
  - Educational and relaxational pavillion,
  - Walkways and geological exhibition.
- Founding of information centre in Karpacz
  - Renovation of building from 19th century, including detached Herbalist's House,
  - Creation of geological trails and medicinal herbs and shrubs trail.

# Development of tourist infrastructure in KRNAP and KPN

**2010**



**2013**



# Development of tourist infrastructure in KRNAP and KPN

2010



2013



# Development of tourist infrastructure in KRNAP and KPN

2010



2013



# Development of tourist infrastructure in KRNAP and KPN

**2010**



**2013**



# Development of tourist infrastructure in KRNAP and KPN

## Klástersní zahrada ve Vrchlabí

## Ogród klasztorny w Vrchlabí

Bavte se v moderní expozici Krkonoš v klášteře pod horami (samostatný leták)  
Obejděte novou expozici o Krkonoších v klášteře pod horami (osobna ulotka)

Prohlédněte si stromy v Sadi starých ovocných odrůd (samostatný leták a infotabule)  
Zobacz drzewa w Sadzie starych odmian owocowych (osobna ulotka i tablica informacyjna)

Geologická expozice Horniny Krkonoš pro negeology (samostatný leták a infotabule)  
Ekspozycja geologiczna Skaly Krkonošy dla amatorův geologii (osobna ulotka i tablica informacyjna)

Útulek pro poraněná divoká zvířata  
Schronisko dla raněných divokých zvířat

Různé povrchy na Nášlapné stezce zkuste bosky  
Różne powierzchnie na Ścieżce terenowej można wypróbować bosko

## Centrum Informacyjne Karkonoskiego Parku Narodowego

## Informační centrum Karkonoskiego Parku Narodowego

Zobacz na żywo ponad 300 gatunków roślin leczniczych Karkonoszy  
Podróz se na více než 300 druhů léčivých rostlin Krkonoš

Wybierz się na spacer ścieżką geoturystyczną lub „ścieżką Wilczego Potoku”  
Wydejdź se na geoturystickoú stezku nebo na stezku Dolina Wilczego Potoku

Podziwiaj ekspozycje geologiczno-geomorfologiczne  
Prohlédni si geologiczno-geomorfologicznoú expozici



Poznaj fascynującą historię karkonoskich laborantůw  
Poznej fascynující historii krkonošských laborantů

Zaopatr se v ulotki informacjny oraz przewodniki po ścieżkach turystycznych  
Získej letáky a průvodce po turistických stezkách

Odpočinij wśród karkonoskich ziół  
Odpočin si mezi krkonošskými bylinami

Zrób własną mieszankę ziół i obejdź skaly i minerały  
Namíchej si vlastní směs bylinek a prohlédni si horniny a nerosty



Parkujcie autem i autobusem přímo u zahrady  
Samochůd i autokar zaparkujesz tuż obok ogrodu

Prohlédněte si dravce ve voliře  
Zobacz drapieżne ptaki w wolierze

Letáky o Klástersní zahradě dostanete v budově Správy Karkonošského národního parku  
Informator o Ogródzie klasztornym otrzymasz w budynku Dyrekcji Karkonošskiego Parku Narodowego

Přivozte k bylinkám v Rastrovém záhonu bylin (samostatný leták a infotabule)  
Powóhajte zióta na grządkach Ogródu ziółowego (osobna ulotka i tablica informacyjna)

Odpočiňte si v trochu jiném altánu ekologické výchovy  
Odpočinij w nietypowej aitanie wiedzy ekologicznej

Souřadnice parkoviště: 50°37'39.761"N, 15°36'21.320"E  
Adresa: Dobrovského 3, Vrchlabí  
Další informace na [www.krnapp.cz/zamereno-na-verejnost](http://www.krnapp.cz/zamereno-na-verejnost)

Współrzędne parkingu: 50°37'39.761"N, 15°36'21.320"E  
Adres: Dobrovského 3, Vrchlabí  
Więcej informacji na [www.krnapp.cz/zamereno-na-verejnost](http://www.krnapp.cz/zamereno-na-verejnost)

Współrzędne parkingu: ?????  
Adres: Ul. Leśna 9, 58-540 Karpacz  
Tel. +48 757000008, GSM: +48 514607299  
Więcej informacji na [www.cikpn.kpnmab.pl](http://www.cikpn.kpnmab.pl)

Souřadnice parkoviště: ?????  
Adresa: Leśna 9, 58-540 Karpacz  
Tel. +48 757000008, GSM: +48 514607299  
Další informace na [www.cikpn.kpnmab.pl](http://www.cikpn.kpnmab.pl)

# Development of tourist infrastructure in KRNAP and KPN

**2010**



**2013**



# Development of tourist infrastructure in KRNAP and KPN





# Development of tourist infrastructure in KRNAP and KPN



# Development of tourist infrastructure in KRNAP and KPN



# Joint education of employees of the Administrations of KRNAP and KPN

---

9/2010 – 8/2014

- Four years of teaching Polish and Czech languages
- Week-long exchanges of experts
- Training in professional subjects
- Creation of Czech-Polish terminological dictionary
- Production of Czech-Polish visitor regulations

# Joint education of employees of the Administrations of KRNAP and KPN



# Joint education of employees of the Administrations of KRNAP and KPN



## KRKONOŠKÝ ČESKO-POLSKÝ SLOVNÍK

*z oblasti přírodních věd  
a životního prostředí*



SPRÁVA KRKONOŠKÉHO NÁRODNÍHO PARKU

[www.krnep.cz](http://www.krnep.cz)



## KARKONOSKI CZESKO-POLSKI SŁOWNIK

*z zakresu nauk przyrodniczych  
i środowiska naturalnego*



SPRÁVA KRKONOŠKÉHO NÁRODNÍHO PARKU

[www.krnep.cz](http://www.krnep.cz)

# Improving transboundary co-operation in ecological education

---

4/2008 – 12/2010

- Project for grammar school students from Vrchlabí and Szklarska Poręba with the aims:
  - Strengthen the co-operation between the parks;
  - Support the creation of new eco-educational programmes, including worksheets and publications;
  - Provide quality environmental education for 60 students taking part in the project.

# Improving transboundary co-operation in ecological education



# Comenius viridis

---

2/2013 – 9/2015

- Creation of environmental education programmes used in the ecological centres in Vrchlabí (KRNAP), in Szklarska Porębie (KPN) and in Horní Maršov (SEVER).
- Total of 24 programmes created, including methodology, study materials and purchasing study aids.



# Comenius viridis



# Comenius viridis



# Safe Krkonoše I and II

---

3/2010 – 11/2011

- First aid training for national park staff in the winter and summer periods.
- Equipping staff with medical materials – first aid kits, etc.
- Creation of a joint traumatological plan.
- Marking around 180 places with signposts with a unique code to allow rapid localisation of the patient in the case of an emergency.

# Safe Krkonoše I and II



# Safe Krkonoše I and II



# Safe Krkonoše I and II



# New projects 2014-2020

---



PŘEKRAČUJEME HRANICE  
PRZEKRACZAMY GRANICE  
2014—2020



EVROPSKÁ UNIE / UNIA EUROPEJSKA  
EVROPSKÝ FOND PRO REGIONÁLNÍ ROZVOJ  
EUROPEJSKI FUNDUSZ ROZWOJU REGIONALNEGO

## Interreg V-A Czech Republic - Poland 2014-2020

# Joint approach to management of KRNAP and KPN

---

6/2016 – 12/2018

- Aim is to greatly increase the intensity of co-operation between both national parks.

Key activities:

- Analyse the legislative framework in the field of nature protection
- Continue with the harmonisation of data according to INSPIRE framework
- Produce a socio-economic analysis of visitor numbers in Krkonoše
- Create a joint strategy for the management of Krkonoše NP



## Joint education of employees of the Administrations of KRNAP and KPN

---

6/2016 – 9/2020

- Aim is increase the intensity of co-operation between both national parks.

Key activities :

- Teaching of Polish and Czech languages
- Annual training in groups
- Week-long exchanges of experts
- Issuing a magazine to inform the general public
- Study trips to national parks in the Czech Republic and Poland in order to learn about “best practise.”

# Thank you for your attention

Ing. Jan Hřebačka  
dr. inž. Andrzej Raj

7.9.2016

